

INI2

RATH ROUNDABOUT TO KILMOON CROSS



Public Consultation 02

Scheme Options

July 2020



An Roinn Iompair,
Turasóireachta agus Spóirt
Department of Transport,
Tourism and Sport



Tionscadal Éireann
Project Ireland
2040



comhairle chontae na mí
meath county council



Fingal County Council
Comhairle Contae Fhine Gall



Scheme Overview

Meath County Council (MCC) has been working in collaboration with Fingal County Council (FCC) and Transport Infrastructure Ireland (TII), to develop a scheme along a section of the N2 between Rath Roundabout and Kilmoon Cross. The existing road currently has a number of issues including high levels of congestion during peak periods.

What's Happening Now?

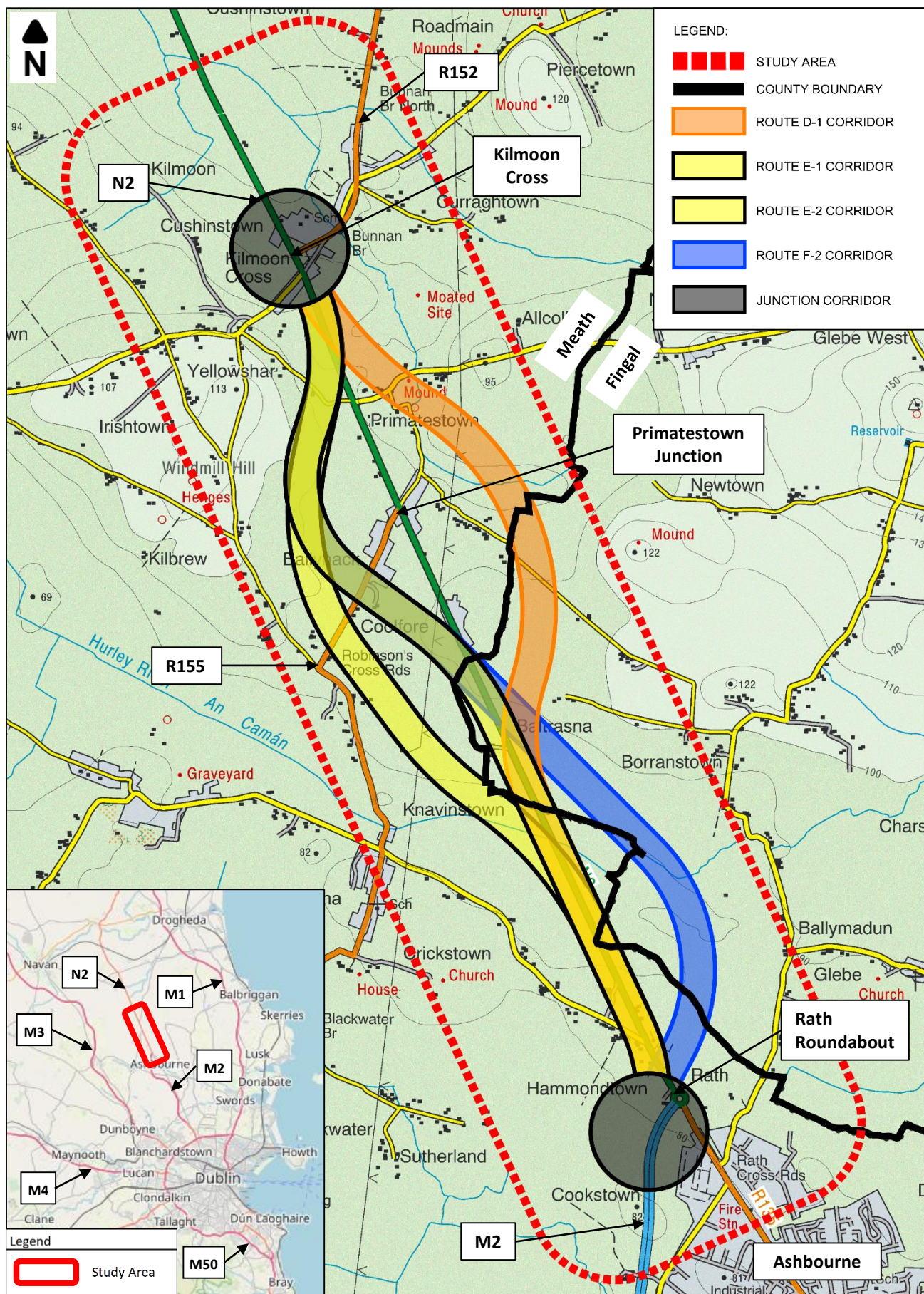
The Project team invite the residents of the local area, members of the public and interested parties to participate in a second round of public consultation on the Scheme Options. In accordance with TII's Project Management Guidelines this consultation forms part of the Stage 2 Options Selection Process and is a follow on from the first public consultation that was held in March 2020. At the first public consultation, feedback was gathered on the study area, constraints and the initial feasible scheme options. This feedback was considered during the Stage 1 assessment, during which the options were assessed under three criteria; Engineering, Environment and Economy. Following the Stage 1 assessment, some of these options were selected to proceed to Stage 2 of the Options Selection Process for a more detailed appraisal. Due to the measures taken in light of the Covid-19 outbreak, it is not possible to arrange a formal event with you in the local area at this time. Instead a project website has been developed (N2Rath2Kilmoon.ie) containing all the information that would normally be displayed at such an event.

Scheme Options

The proposed options that are undergoing a more detailed appraisal are outlined below and shown in more detail on the next page. There are four 200m wide route corridor options, and two alternatives; a traffic management and a public transport option, as well as the Do Nothing option which acts as a baseline for the assessment. The 200m corridor does not represent the actual width of the road scheme or the lands to be acquired – the corridor indicates the lands within which the a potential road alignment could be developed. It should be noted that the boundary of the route corridor may be subject to change as the project develops to address any new or previously unidentified constraints emerging during the design process. These options will be assessed with the aim of developing an emerging preferred option by the end of the assessment.

Route D-1	Online improvements from Rath Roundabout initially, then an offline section to the east of the existing N2 before tying back into the existing N2 at Kilmoon Cross.
Route E-1	Online improvements from Rath Roundabout initially, then an offline section to the west of the existing N2 before tying back into the existing N2 at Kilmoon Cross.
Route E-2	Online improvements from Rath Roundabout initially, then an offline section to the west of the existing N2 (different to Option E-1 listed above) before tying back into the existing N2 at Kilmoon Cross.
Route F-2	Offline option from Rath Roundabout to the east of the existing N2 before crossing the existing N2 and continuing to the west and tying back into the existing N2 at Kilmoon Cross.
Traffic Management	Utilising exiting junctions and improvements with the existing road boundary, and demand management and access control.
Public Transport	The provision of bus lanes and a park & ride facility adjacent to the N2 are to be considered as standalone options and as complimentary elements of the route corridor options.

Drawing 1 – Proposed Scheme Options



© ORDNANCE SURVEY IRELAND, 2020.

ALL RIGHTS RESERVED LICENCE NUMBER 2020/31/CCMA/MEATHCOUNTYCOUNCIL

What Happens Next?

Following the consultation period the project team will review all the information gathered. This information will then form part of the ongoing project appraisal of the proposed options with the aim of finalising the option selection as set out below.

**Public Consultation
July 2020**

**Emerging Preferred Option
Identification**

**Preliminary Design +
Environmental Evaluation**

Statutory Process

**Detailed Design, Procurement
& Construction**

*all subject to funding and approvals

Your Involvement

Please examine the proposed options, and let your comments be known by completing the questionnaire.

The questionnaire is available digitally and can be completed online at: N2Rath2Kilmoon.ie. Alternatively fill out the enclosed questionnaire and respond by post or scan and email.

The closing date for returning completed questionnaires is **12th August 2020.**

Any ongoing scheme queries that you may have after this date can be mailed / emailed to the adjacent address on an ongoing basis. These will be reviewed by the project team.

Further Information

For further information please contact:

Meath County Council:

Senior Engineer,
Transportation Department,
Meath County Council,
Buvinda House,
Dublin Road,
Navan, C15 Y291,
County Meath

Email: transport@meathcoco.ie

Web: N2Rath2Kilmoon.ie

Engineering Design Consultants (ROD-AECOM):

N2 Rath to Kilmoon
Project Team,
AECOM
4th Floor, Adelphi Plaza,
George's Street Upper,
Dun Laoghaire, A96 T927,
County Dublin

Email: N2Rath2Kilmoon@aecom.com

Web: N2Rath2Kilmoon.ie



comhairle chontae na mí
meath county council



Fingal County Council
Comhairle Contae Fhine Gall

